

Spearfish Public Schools

Educational Adequacy Summary Report



February 2020

Prepared By:



Table of Contents

What is Educational Adequacy?	2
Educational Adequacy Process	4
Educational Adequacy Color Key	5
Mt. View Elementary School	
Educational Adequacy Summary	6
West Elementary School	
Educational Adequacy Summary	9
Creekside Elementary School	
Educational Adequacy Summary	12
Middle School	
Educational Adequacy Summary	15
High School	
Educational Adequacy Summary	18
District-Wide Educational Adequacy Summary Table Comparison	21
Why is This Important?	22

What is Educational Adequacy?

Educational Adequacy is a complete analysis of a school building focusing on 18 categories as indicated below.

1. Classroom Size and Suitability
2. Cafeteria/Kitchen/Serving
3. Security and Supervision
4. Main Office/Nurse/Support Services
5. Science Classrooms/Labs
6. Art Classrooms/Labs
7. Music Classrooms/Practice Areas/Etc.
8. Teacher/Staff Collaborative Planning Areas
9. Student Commons/Break-Out Areas
10. Physical Education/Athletics/Locker Rooms/Pool Etc.
11. Site Suitability: Fields/Green Space, Playgrounds Etc.
12. Parking and Bus Drop-off: Staff/Students/Parents
13. Technology
14. Library/Media Center: Location/Size/Layout
15. Special Education/Support Services
16. Auditoriums/Performing Arts Spaces
17. Career and Technical Education
18. Hallways/Washrooms/Lockers/Maintenance



Guide for Planning School Construction Projects in Minnesota

Division of School Finance
1500 Highway 36 West
Roseville, MN 55113
Telephone: 651-582-8779
Fax: 651-582-8878
Email: mde.funding@state.mn.us
Website: Minnesota.Department.of.Education

Analysis in Each of 18 Categories – Five Criteria

1. *Current district programming – enrollment, # of K-12 classes, % of Special Education, etc.*

2. *Published Guidelines for Public School Buildings*

3. *Designing School Buildings for 21st Century Learning*

4. *Anticipated future needs – Demographic Projection, etc.*




5. *Input from the Spearfish education staff.*

Educational Adequacy Process:

- Room by room walk through and analysis of
 - ✓ Mt. View Elementary School (SPED PK-K)
 - ✓ West Elementary School (1-2)
 - ✓ Creekside Elementary School (3-5)
 - ✓ Spearfish Middle School (6-8)
 - ✓ Spearfish High School (9-12)
- Space analysis compared to published standards and 21st Century School best practices
- Review of educational staff input
- Final report presented

Educational Adequacy Color Key:

After analysis, a “color” rating is assigned to each of the 18 categories based on the following:

 <p data-bbox="305 533 470 590">Green</p>	<p data-bbox="618 491 1291 648">Adequate – Meets 4-5 of the Analysis Criteria – including published Guidelines for School Educational Adequacy and 21st Century Instructional Spaces</p>
 <p data-bbox="305 764 470 821">Yellow</p>	<p data-bbox="618 716 1356 873">Questionable Adequacy – Meets only 2-3 of the Analysis Criteria but may be <u>considered</u> adequate based upon current/future programming/enrollment and/or size of area. Perceived as a need by staff.</p>
 <p data-bbox="337 974 438 1031">Red</p>	<p data-bbox="618 968 1356 1041">Inadequate – Meets 1 or none of the Analysis Criteria – Is perceived as a <u>significant</u> need by staff.</p>

Mt. View Elementary Educational Adequacy Summary

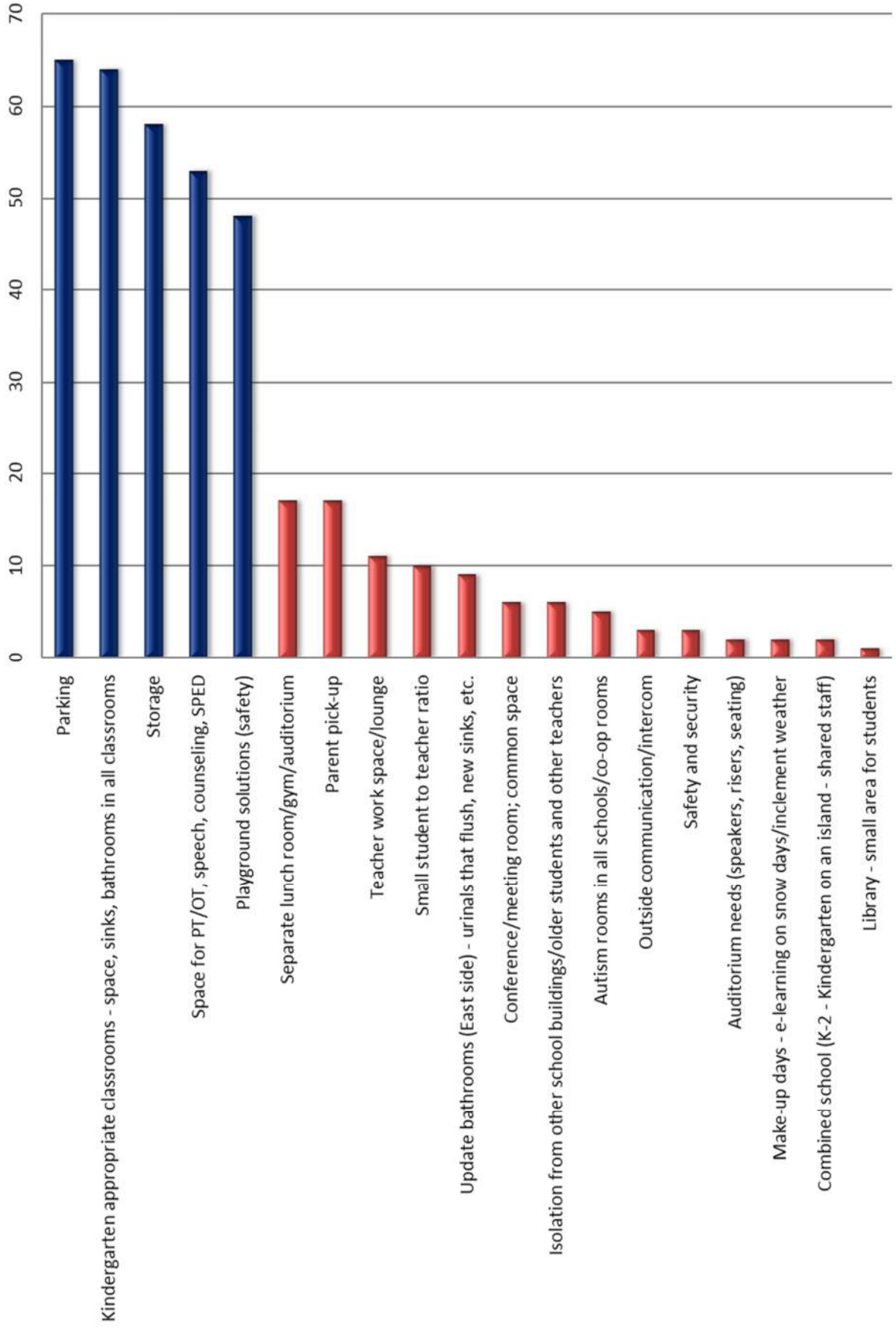
CATEGORY	COLOR
1 Classroom Size and Suitability	R
2 Cafeteria/Kitchen/Serving	Y
3 Security and Supervision	G
4 Main Office/Nurse/Support Services	G
5/6 Science & Art Class/labs	G
7 Music Classrooms/Practice Areas/Etc.	G
8 Staff Lounge/Collaborative Planning Areas	R
9 Student Commons/Break-Out Areas	Y
10 Physical Education/Athletics/Locker Rooms/Pool Etc.	Y
11 Site Suitability: Fields/Green Space/ Storage Etc.	R
12 Parking/Bus Drop-Off: Staff/Students/Parents	R
13 Technology	G
14 Library/Media Center: Location/Size/Layout	Y
15 Special Education/Support Services	R
16 Auditoriums/Performing Arts Spaces	Y
17 Career and Technical Education	NA
18 Hallways/Lockers/Washrooms/Maintenance space	Y

Mt. View Elementary

Educational Adequacy Overlay



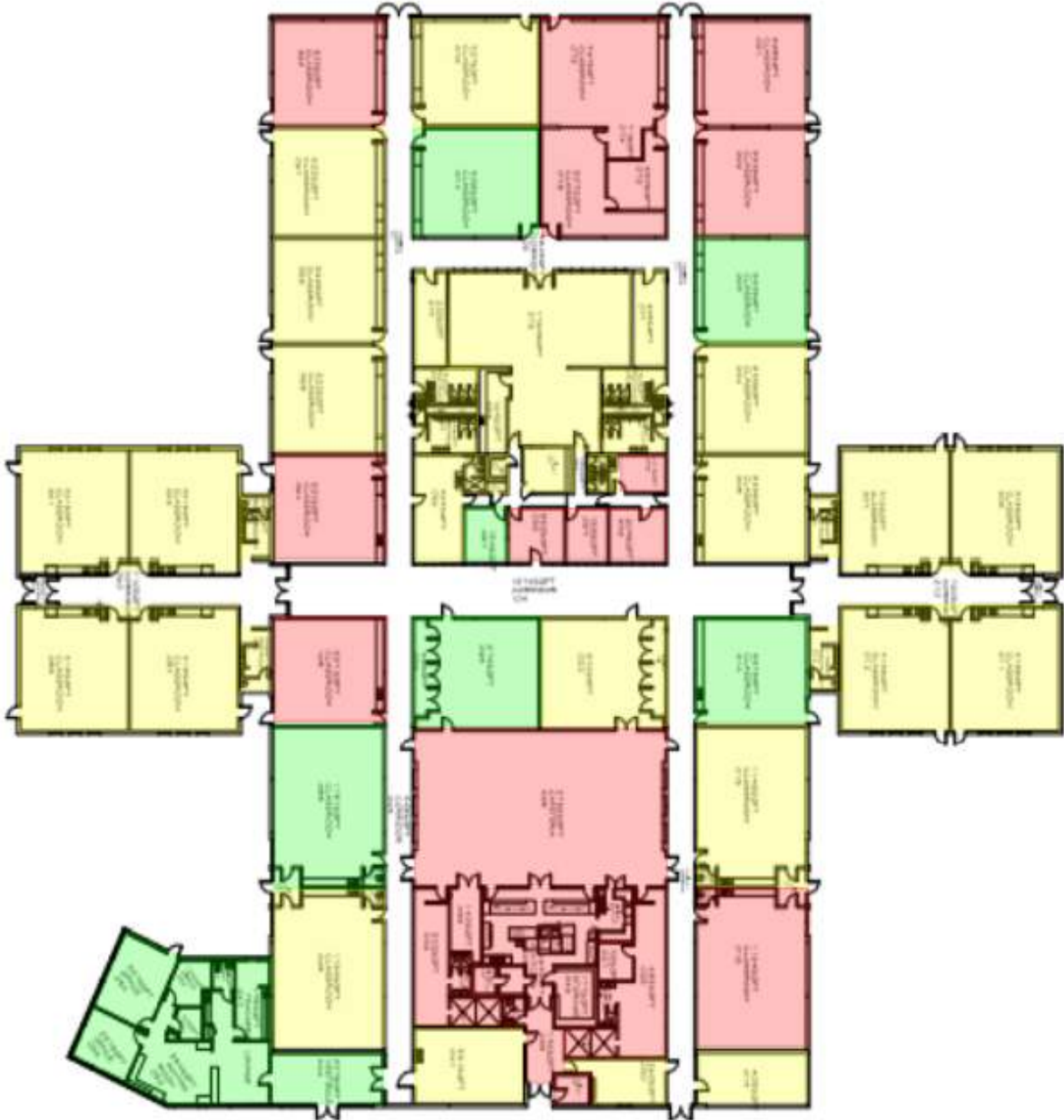
Mountainview Elementary School Staff - NEEDS



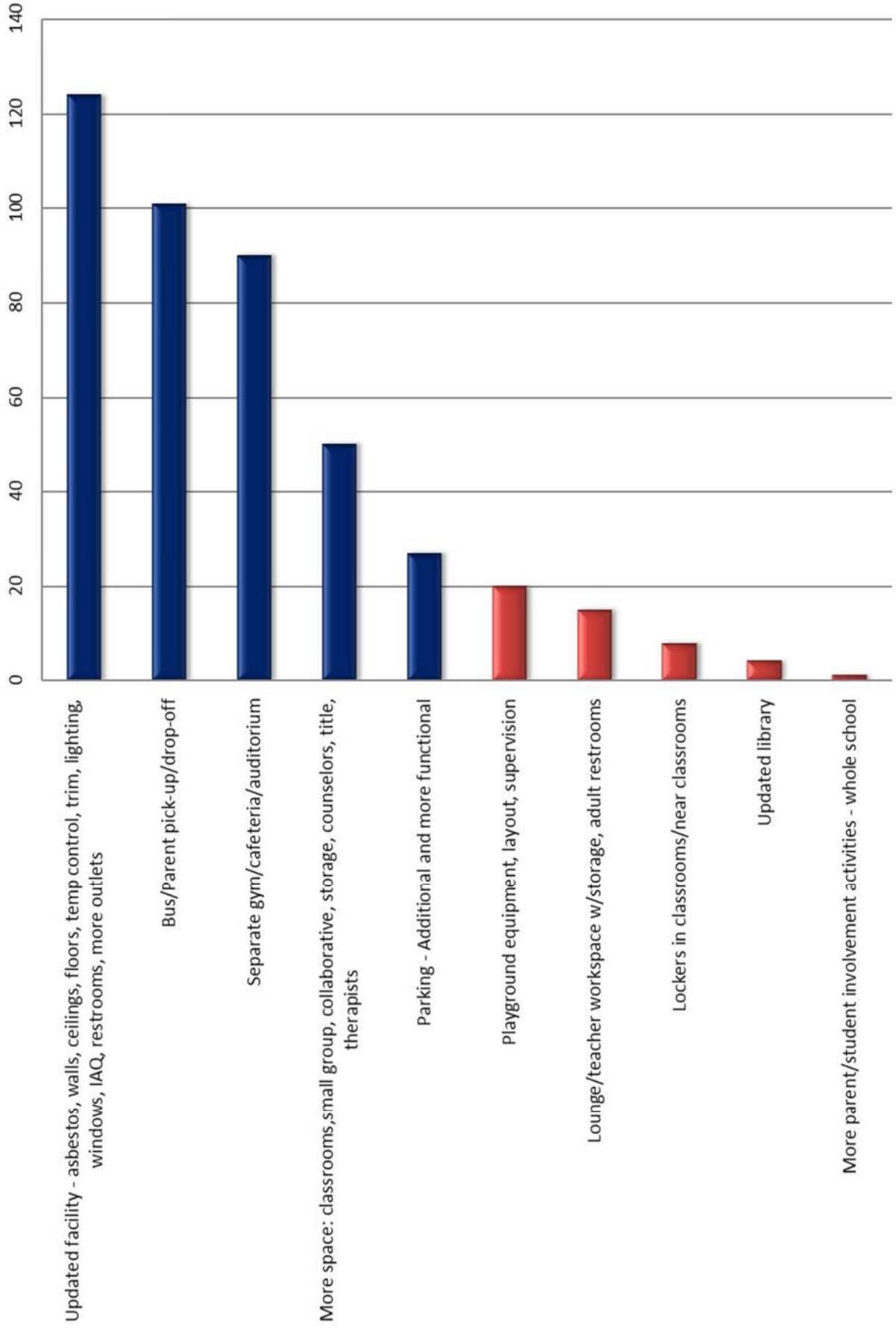
West Elementary Educational Adequacy Summary

CATEGORY		COLOR
1	Classroom Size and Suitability	Y
2	Cafeteria/Kitchen/Serving	R
3	Security and Supervision	G
4	Main Office/Nurse/Support Services	G
5/6	Science & Art Class/labs	G
7	Music Classrooms/Practice Areas/Etc.	Y
8	Staff Lounge/Collaborative Planning Areas	Y
9	Student Commons/Break-Out Areas	R
10	Physical Education/Athletics/Locker Rooms/Pool Etc.	R
11	Site Suitability: Fields/Green Space/ Storage Etc.	R
12	Parking/Bus Drop-Off: Staff/Students/Parents	R
13	Technology	G
14	Library/Media Center: Location/Size/Layout	Y
15	Special Education/Support Services	R
16	Auditoriums/Performing Arts Spaces	R
17	Career and Technical Education	NA
18	Hallways/Lockers/Washrooms/Maintenance space	Y

West Elementary Educational Adequacy Overlay



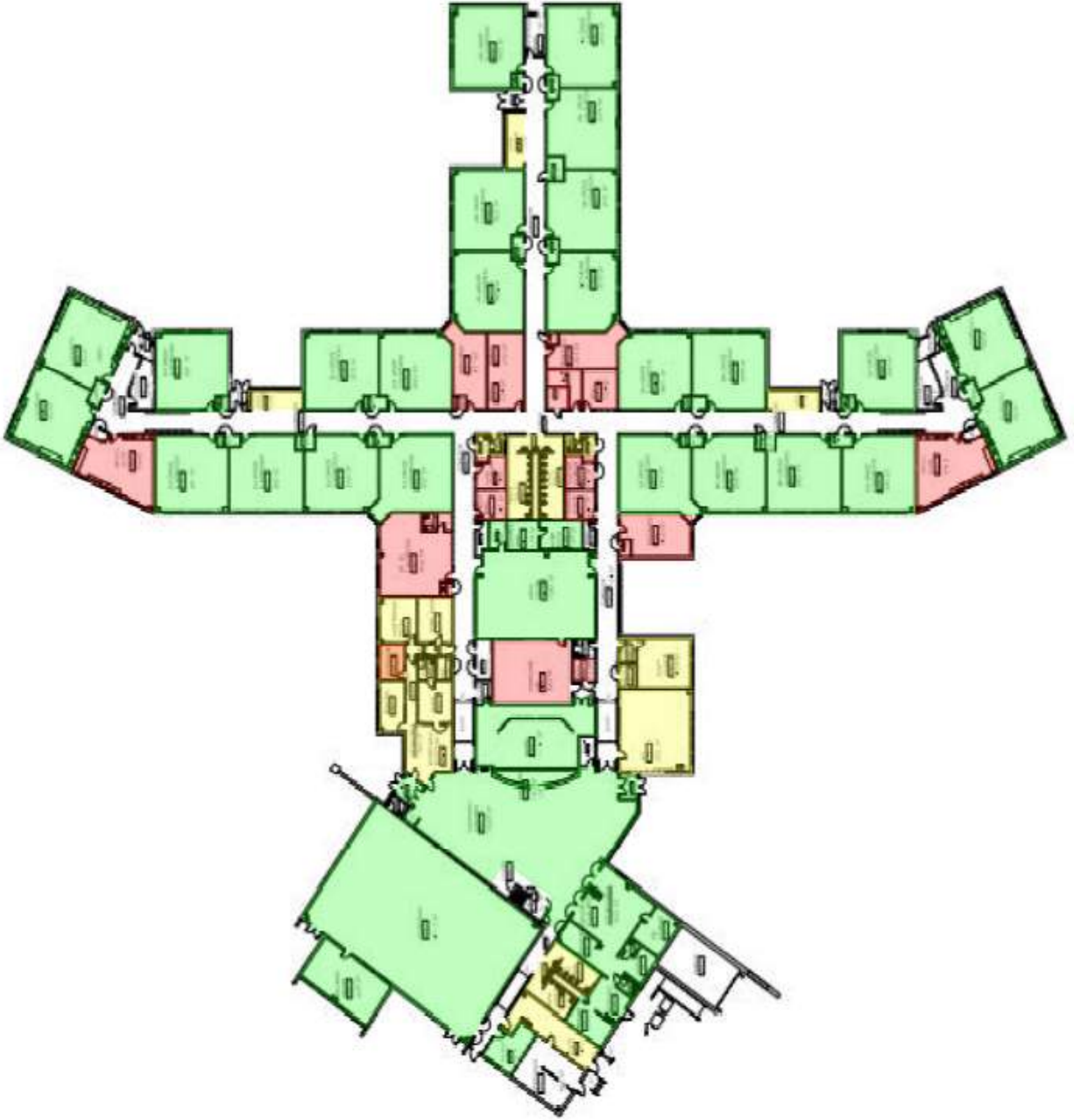
West Elementary School Staff - NEEDS



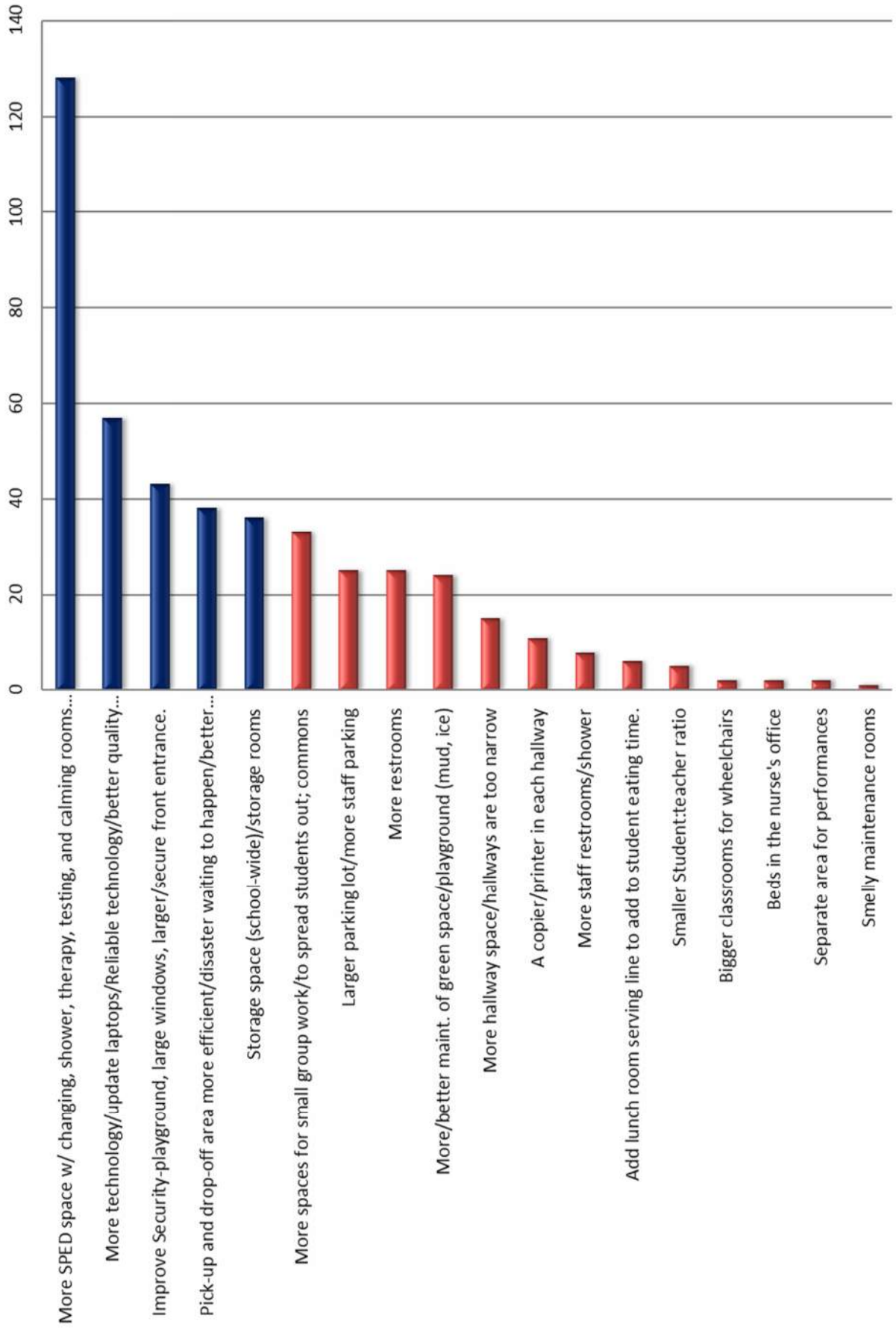
Creekside Elementary Educational Adequacy Summary

CATEGORY		COLOR
1	Classroom Size and Suitability	G
2	Cafeteria/Kitchen/Serving	G
3	Security and Supervision	G
4	Main Office/Nurse/Support Services	Y
5/6	Science & Art Class/labs	Y
7	Music Classrooms/Practice Areas/Etc.	G
8	Staff Lounge/Collaborative Planning Areas	Y
9	Student Commons/Break-Out Areas	Y
10	Physical Education/Athletics/Locker Rooms/Pool Etc.	G
11	Site Suitability: Fields/Green Space/ Storage Etc.	R
12	Parking/Bus Drop-Off: Staff/Students/Parents	R
13	Technology	Y
14	Library/Media Center: Location/Size/Layout	G
15	Special Education/Support Services	R
16	Auditoriums/Performing Arts Spaces	G
17	Career and Technical Education	NA
18	Hallways/Lockers/Washrooms/Maintenance space	Y

Creekside Elementary
Educational Adequacy Overlay



Creekside Elementary School Staff - NEEDS

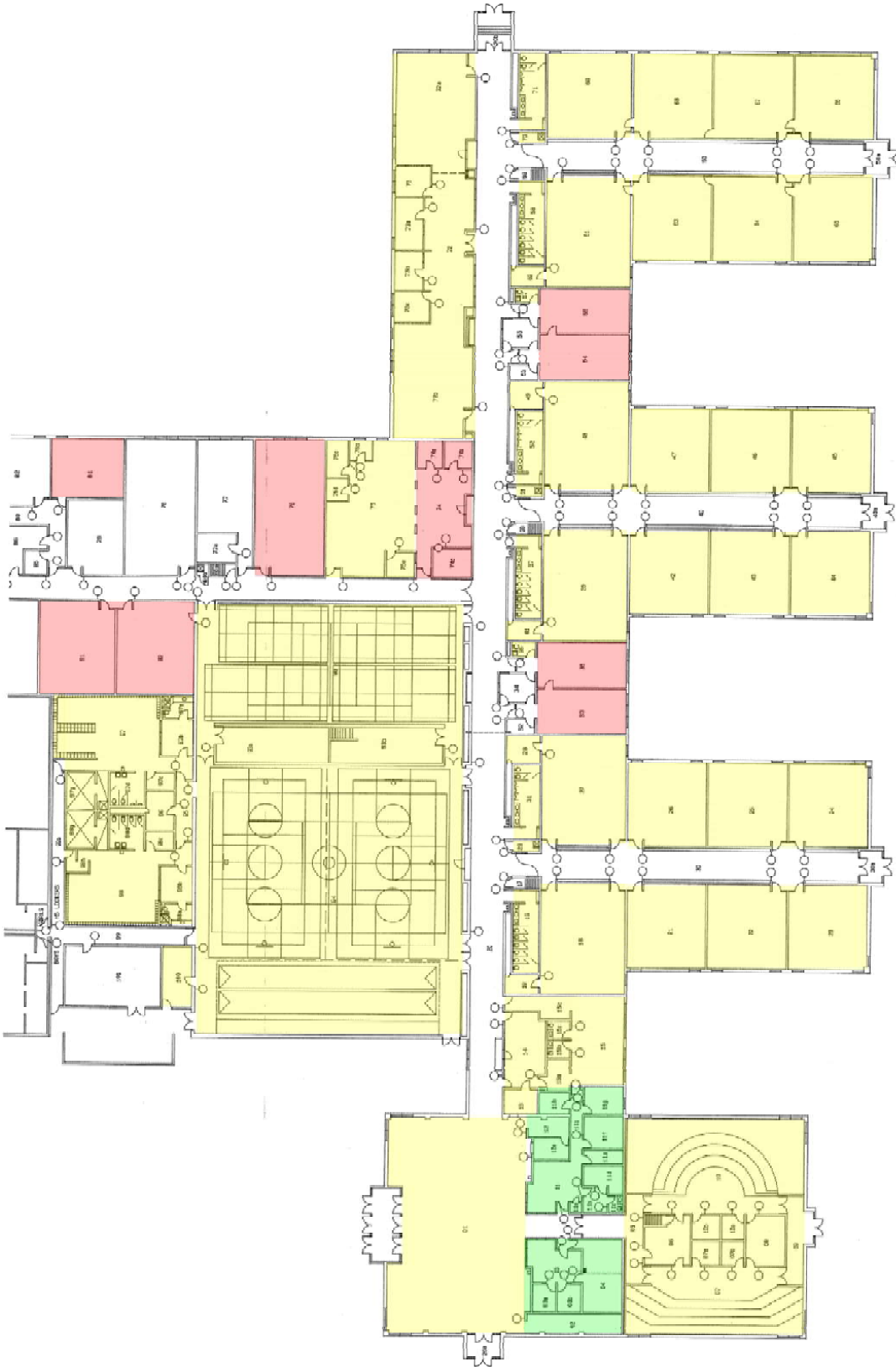


Spearfish Middle School

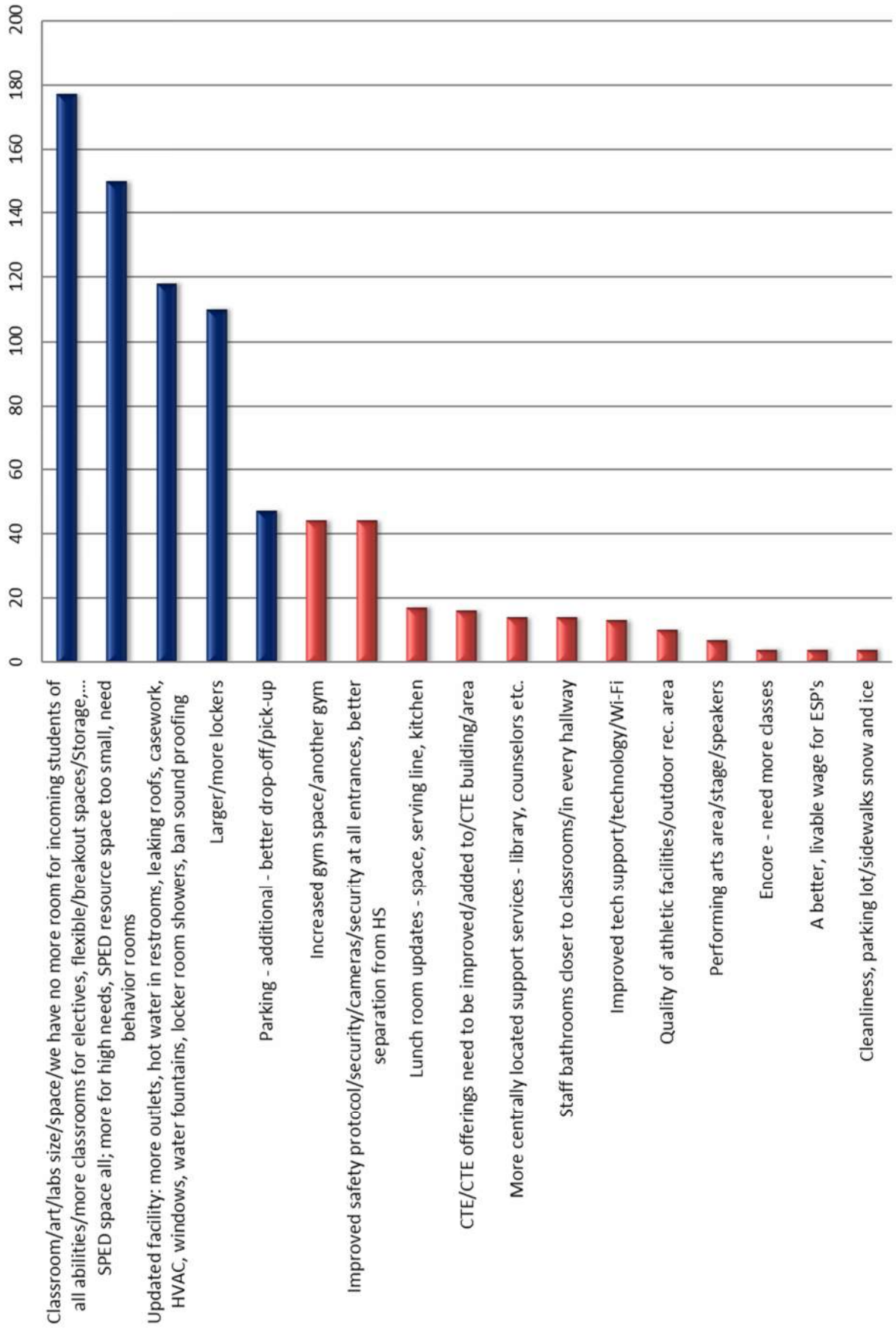
Educational Adequacy Summary

CATEGORY	COLOR
1 Classroom Size and Suitability	Y
2 Cafeteria/Kitchen/Serving	Y
3 Security and Supervision	Y
4 Main Office/Nurse/Support Services	G
5 Science Classrooms/Labs	Y
6 Art Classrooms/Labs	R
7 Music Classrooms/Practice Areas/Etc.	Y
8 Staff Lounge/Collaborative Planning Areas	Y
9 Student Commons/Break-Out Areas	Y
10 Physical Education/Athletics/Locker Rooms/Pool Etc.	Y
11 Site Suitability: Fields/Green Space/ Storage Etc.	Y
12 Parking/Bus Drop-Off: Staff/Students/Parents	R
13 Technology	Y
14 Library/Media Center: Location/Size/Layout	Y
15 Special Education/Support Services	R
16 Auditoriums/Performing Arts Spaces	G
17 Career and Technical Education	Y
18 Hallways/Lockers/Washrooms/Maintenance space	Y

Spearfish Middle School Educational Adequacy Overlay



Spearfish Middle School Staff - NEEDS

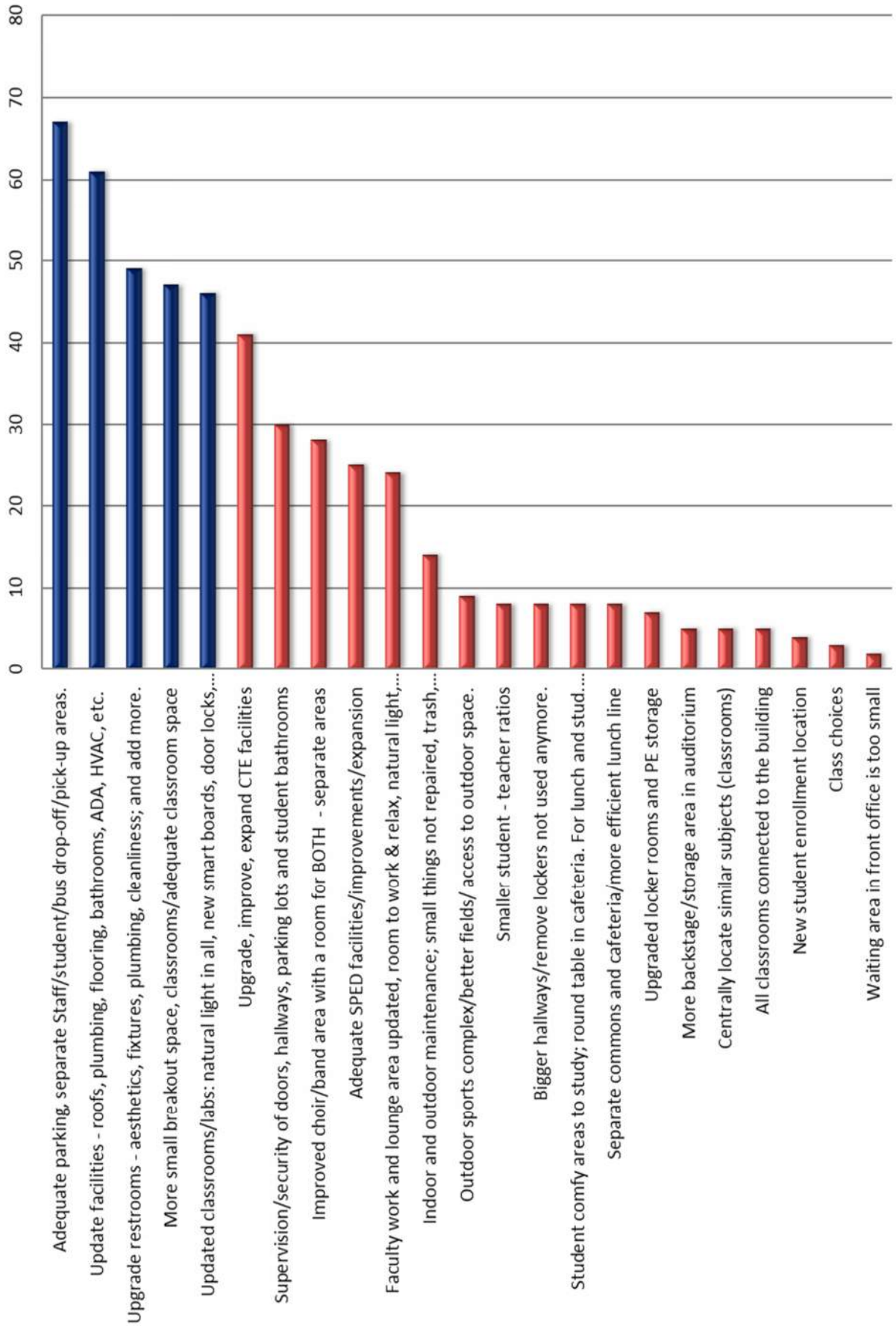


Spearfish High School

Educational Adequacy Summary

CATEGORY	COLOR
1 Classroom Size and Suitability	Y
2 Cafeteria/Kitchen/Serving	Y
3 Security and Supervision	Y
4 Main Office/Nurse/Support Services	Y
5 Science Classrooms/Labs	R
6 Art Classrooms/Labs	R
7 Music Classrooms/Practice Areas/Etc.	R
8 Staff Lounge/Collaborative Planning Areas	R
9 Student Commons/Break-Out Areas	G
10 Physical Education/Athletics/Locker Rooms/Pool Etc.	G
11 Site Suitability: Fields/Green Space/ Storage Etc.	Y
12 Parking/Bus Drop-Off: Staff/Students/Parents	R
13 Technology	G
14 Library/Media Center: Location/Size/Layout	G
15 Special Education/Support Services	Y
16 Auditoriums/Performing Arts Spaces	Y
17 Career and Technical Education	Y
18 Hallways/Lockers/Washrooms/Maintenance space	R

Spearfish High School Staff - NEEDS



District-Wide Education Adequacy Comparison

CATEGORY		MV	WE	CE	MS	HS
1	Classroom Size and Suitability	R	Y	G	Y	Y
2	Cafeteria/Kitchen/Serving	Y	R	G	Y	Y
3	Security and Supervision	G	G	G	Y	Y
4	Main Office/Nurse/Support Services	G	G	Y	G	Y
5	Science Classrooms/Labs	G	G	Y	Y	R
6	Art Classrooms/Labs	G	G	Y	R	R
7	Music Classrooms/Practice Areas/Etc.	G	Y	G	Y	R
8	Staff Lounge/Collaborative Planning Areas	R	Y	Y	Y	R
9	Student Commons/Break-Out Areas	Y	R	Y	Y	G
10	Physical Education/Athletics/Locker Rooms/Pool Etc.	Y	R	G	Y	G
11	Site Suitability: Fields/Green Space/ Storage Etc.	R	R	R	Y	Y
12	Parking/Bus Drop-Off: Staff/Students/Parents	R	R	R	R	R
13	Technology	G	G	Y	Y	G
14	Library/Media Center: Location/Size/Layout	Y	Y	G	Y	G
15	Special Education/Support Services	R	R	R	R	Y
16	Auditoriums/Performing Arts Spaces	Y	R	G	G	Y
17	Career and Technical Education	NA	NA	NA	Y	Y
18	Hallways/Lockers/Washrooms/Maintenance space	Y	Y	Y	Y	R

Why is this information Important?

Spearfish School Board and Administration:

- are doing their homework.
- are aware that some significant needs exist in the district's facilities.
- recognizes that teaching/learning strategies have changed since many of the district's facilities were constructed.
- is listening to staff.
- will have good solid data for decision making.
- is establishing transparency with staff and community.